

ESa

20

IN REVIEW

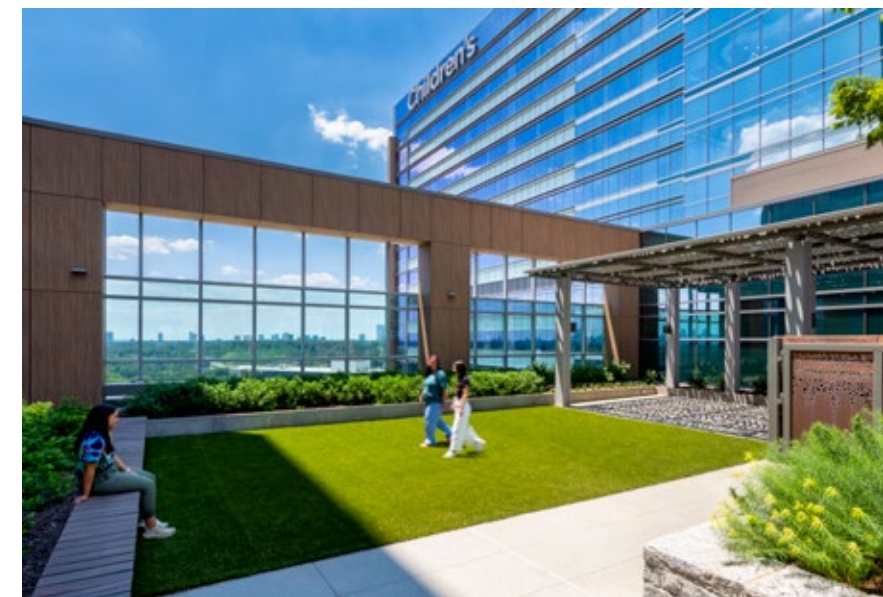
24





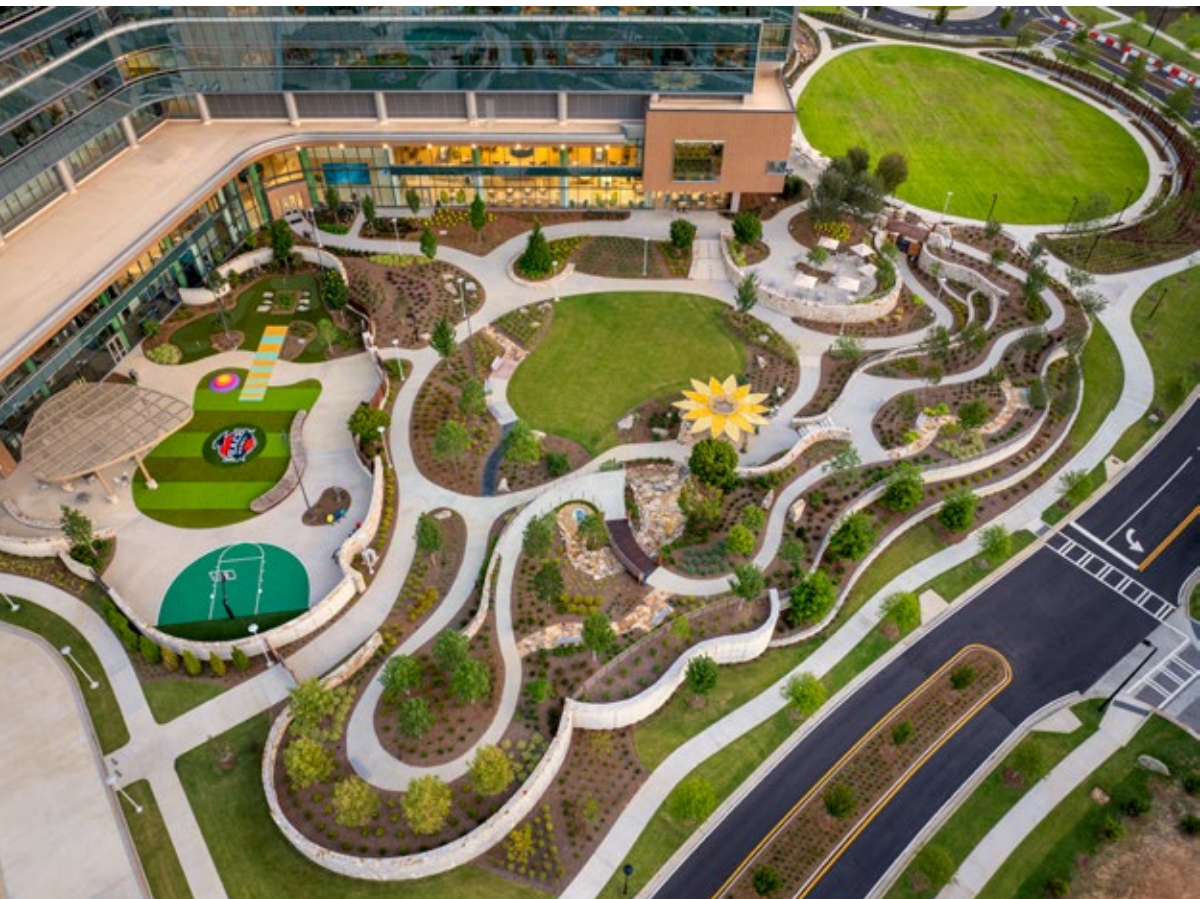
Pantone® Color of the Year 2024
Peach Fuzz

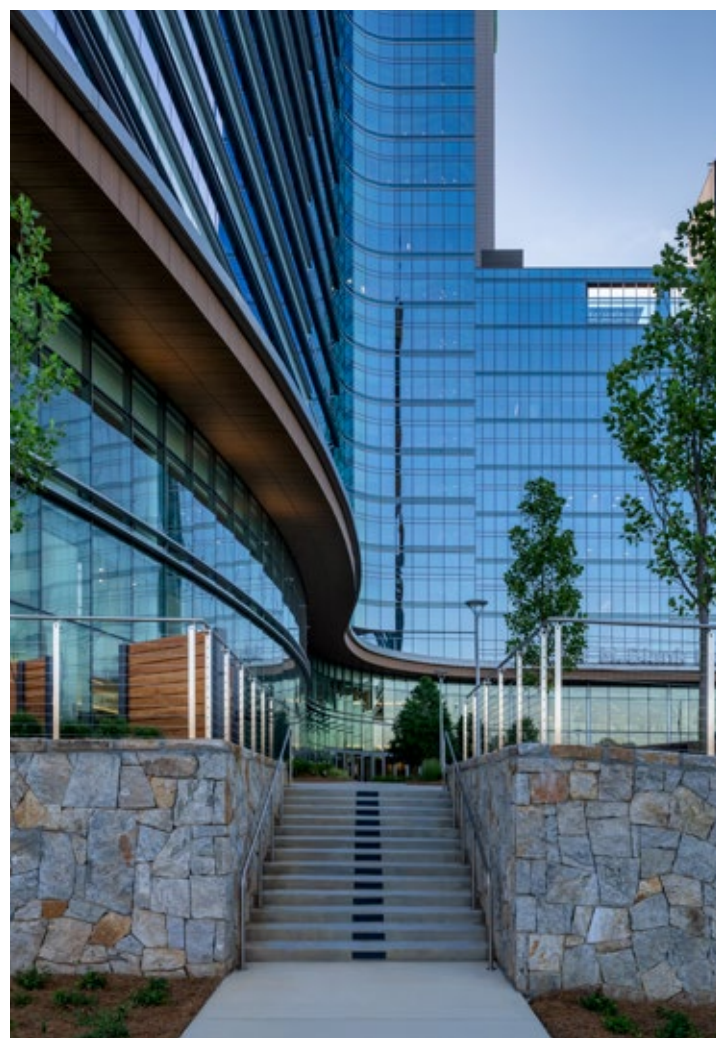
- | | |
|----|--|
| 1 | Children’s Healthcare of Atlanta Arthur M. Blank Hospital |
| 2 | Tempo by Hilton & Topgolf Swing Suite |
| 3 | Thomas F. Frist, Jr. College of Medicine at Belmont University |
| 4 | Prima at Paseo South Gulch |
| 5 | Jupiter Medical Center Johnny & Terry Gray Surgical Institute |
| 6 | JE Dunn Neuhoff Tenant Build-out |
| 7 | Belmont University Jack C. Massey Center |
| 8 | Westover Hills Baptist Hospital Medical Campus & Medical Office Building |
| 9 | Williamson Health Boyer-Bryan West Tower |
| 10 | Donelson Christian Academy Elementary & Performing Arts Addition |
| 11 | Sumner County Judicial Center |
| 12 | University Hospitals Amherst Health Center & UH Amherst Beaver Creek Surgery Center |
| 13 | St. Paul Christian Academy McGuffey Hall |
| 14 | Trinity Health System Trinity Medical Center West |
| 15 | Private Residence |
| 16 | Vanderbilt University Blair School of Music Steve & Judy Turner Recital Hall |
| 17 | TOA Orthopaedic & Urgent Care Clinic at Bristol Ridge |
| 18 | Baptist Memorial Hospital Carroll County Hospital Outpatient Surgery Department & The Jackson Clinic |



1 HEALTHCARE

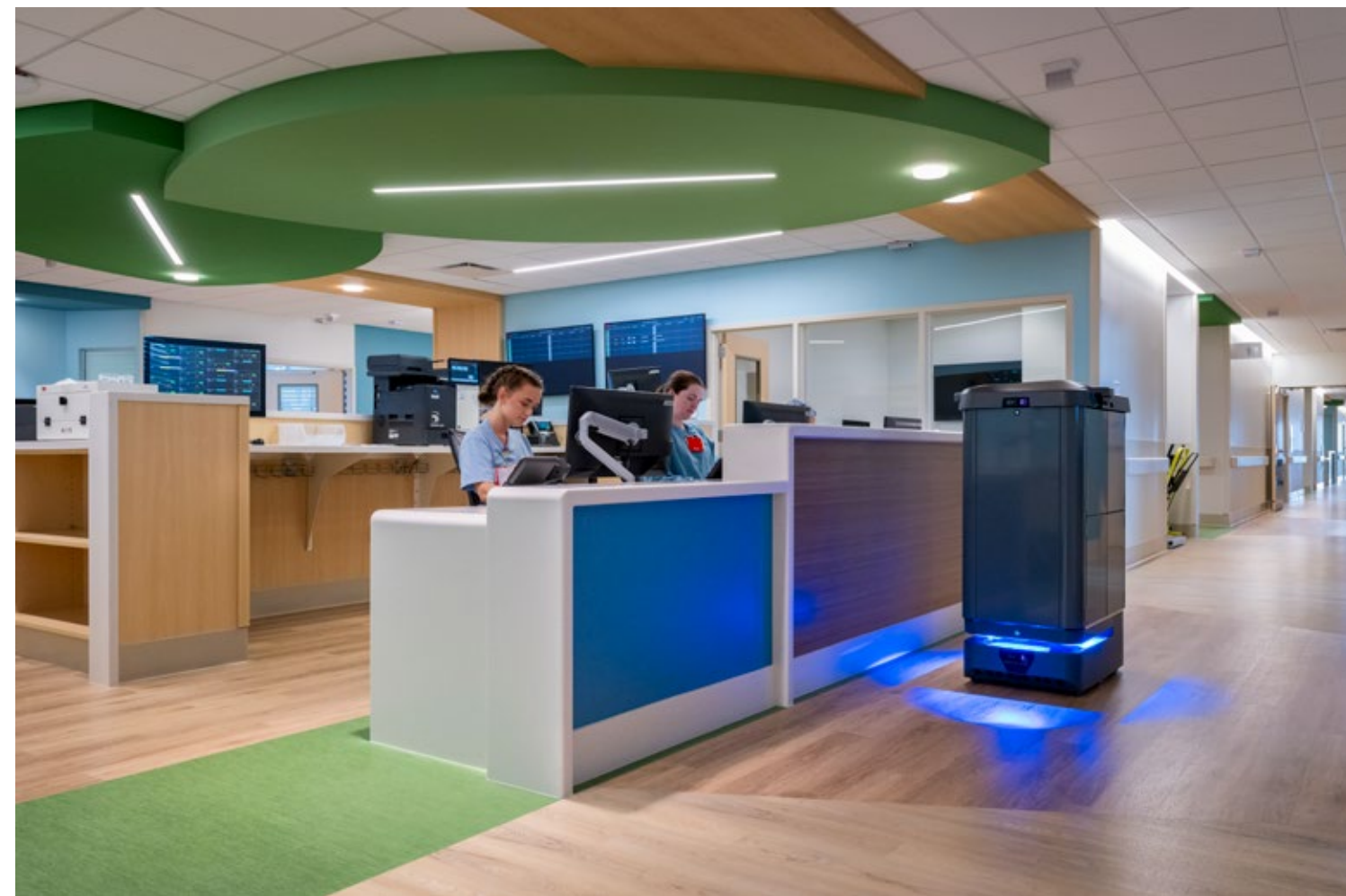
Children's Healthcare of Atlanta –
Arthur M. Blank Hospital
Brookhaven, GA









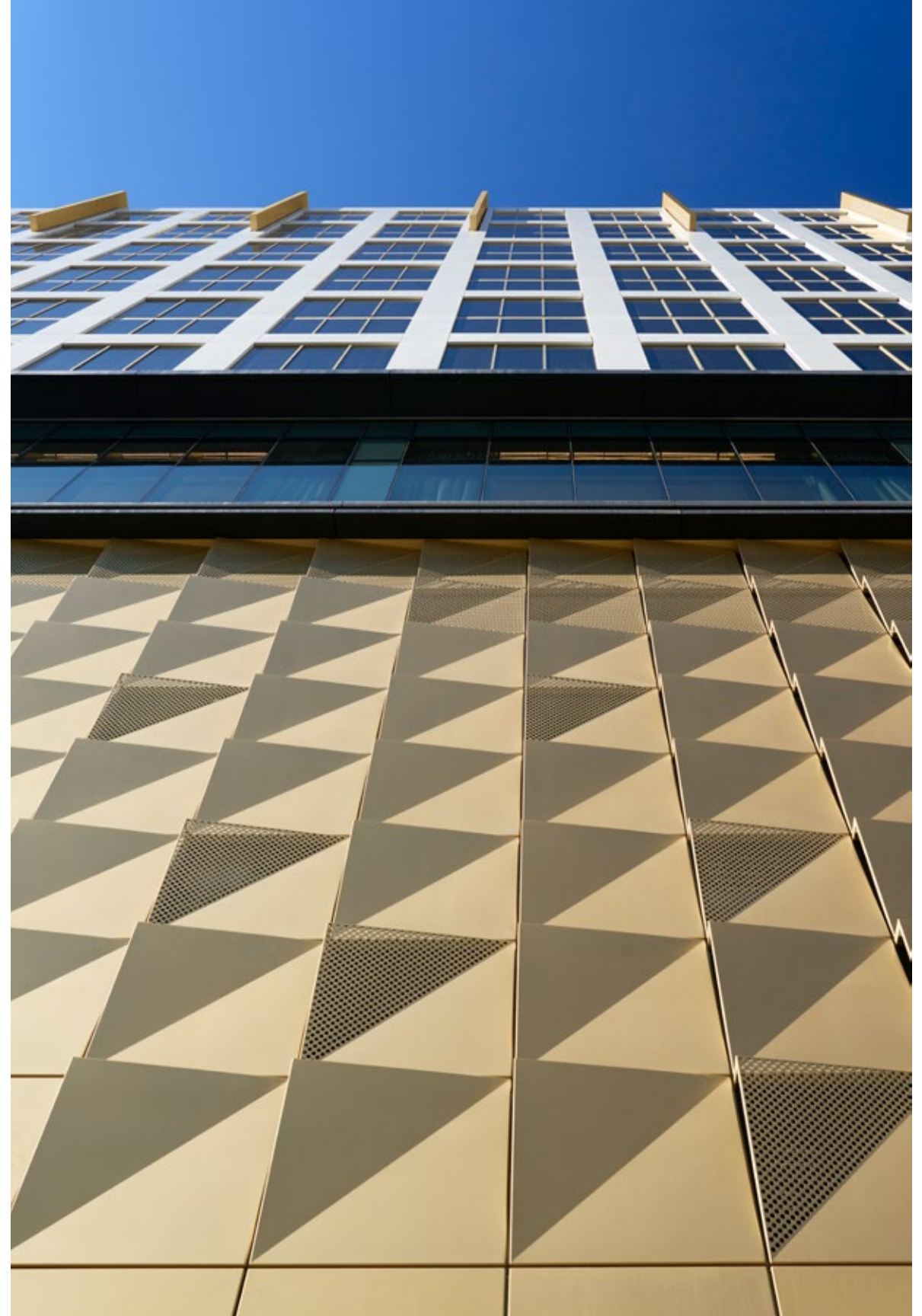


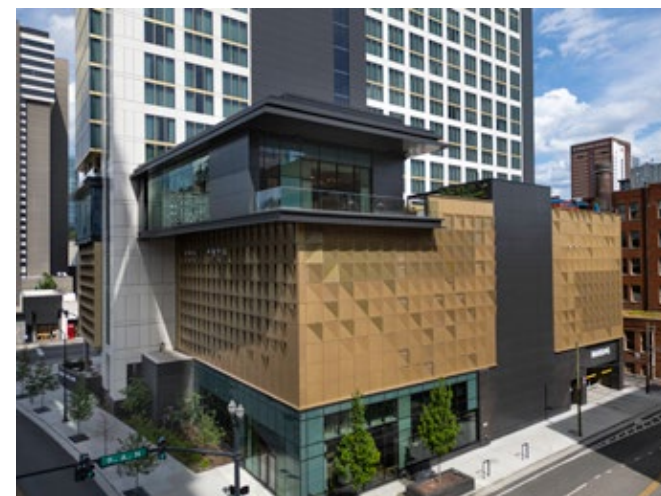




2 HOSPITALITY

Tempo by Hilton & Topgolf Swing Suite
Nashville, TN



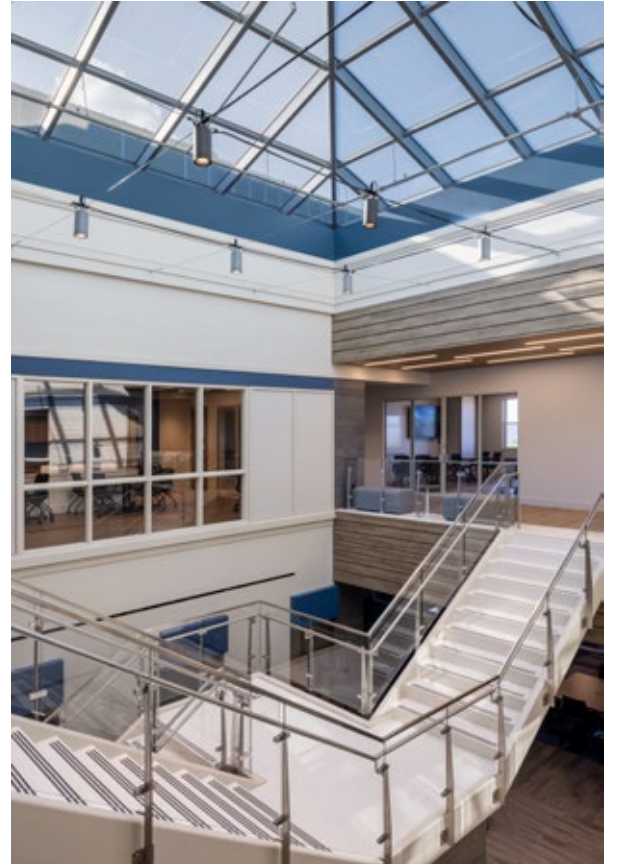
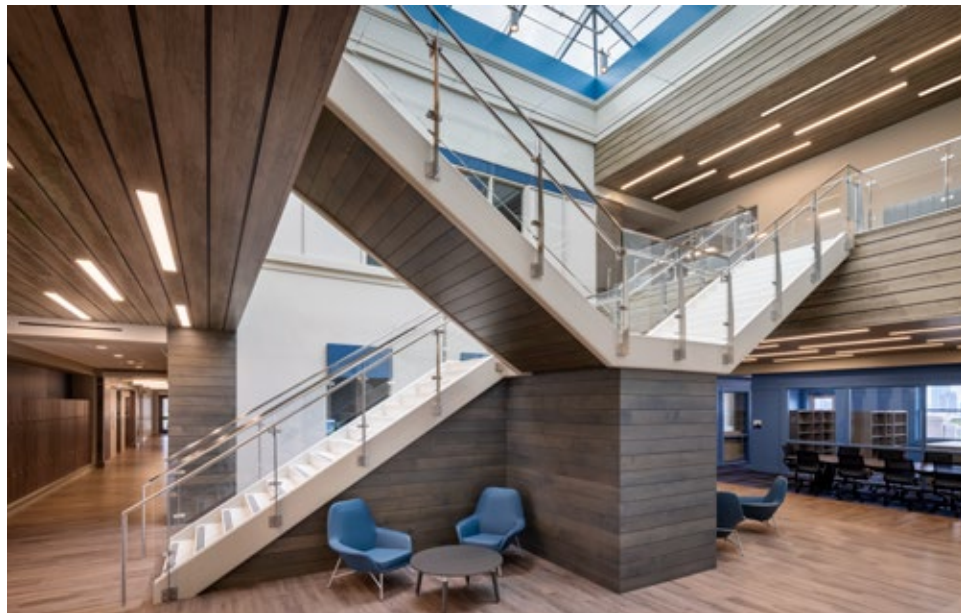






3 EDUCATION

Thomas F. Frist, Jr. College of Medicine
at Belmont University
Nashville, TN







4 RESIDENTIAL

Prima at Paseo South Gulch
Nashville, TN







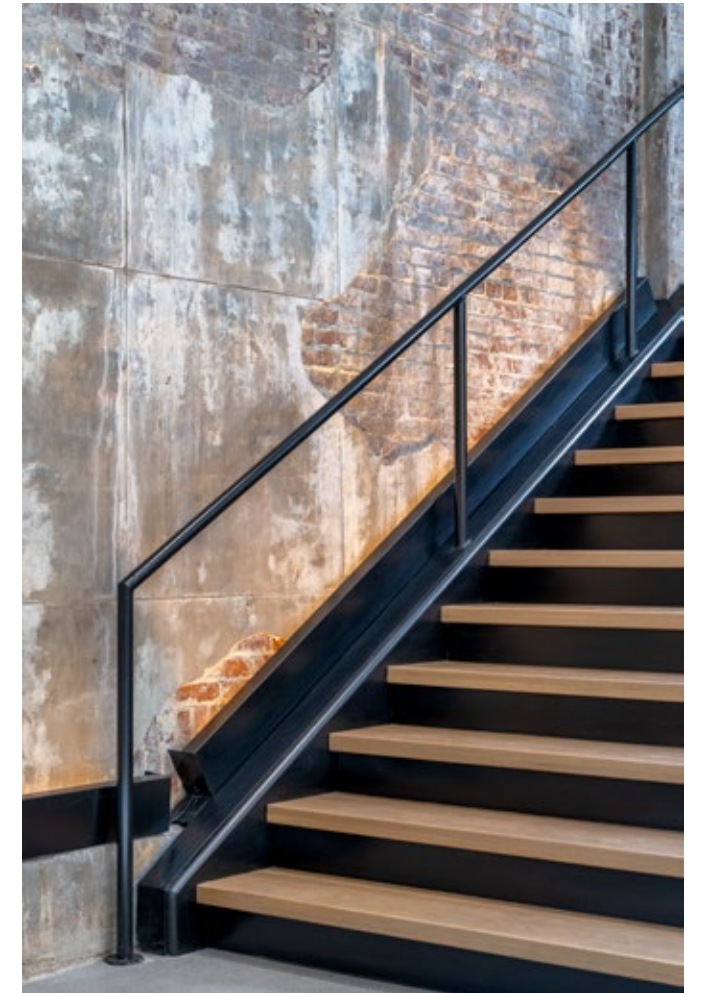


5 HEALTHCARE

Jupiter Medical Center –
Johnny and Terry Gray Surgical Institute
Jupiter, FL

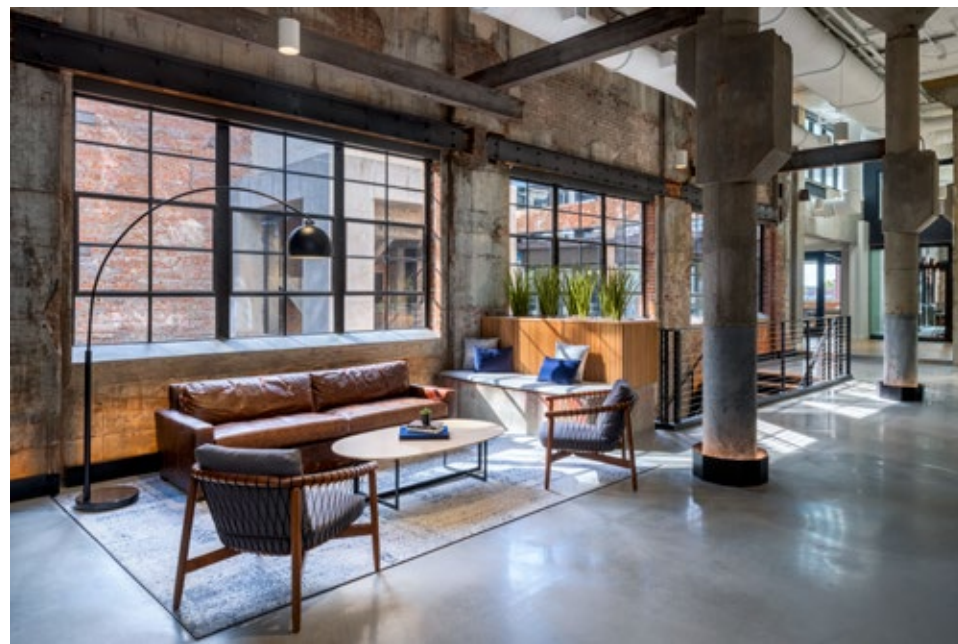






6 COMMERCIAL

JE Dunn Neuhoff Tenant Build-out
Nashville, TN







LEED® Silver

Fitwel® One Star



7 EDUCATION

Belmont University – Jack C. Massey Center
Nashville, TN







8 HEALTHCARE

Westover Hills Baptist Hospital –
Medical Campus and Medical Office Building
San Antonio, TX







9 HEALTHCARE

Williamson Health – Williamson Medical
Center Boyer-Bryan West Tower
Franklin, TN







10 EDUCATION

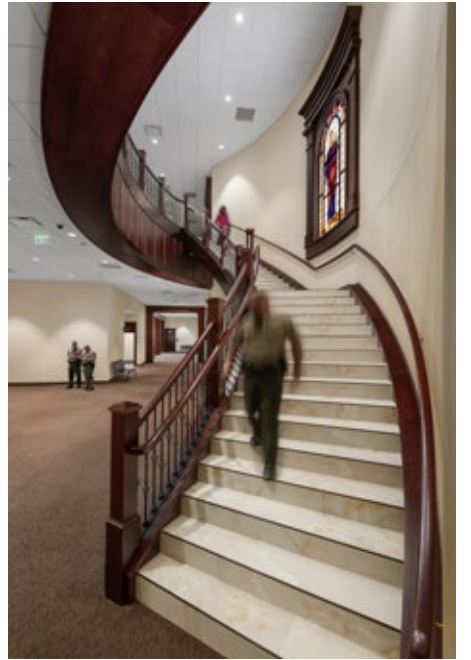
Donelson Christian Academy –
Elementary and Performing Arts Addition
Nashville, TN





11 COMMUNITY + ARTS

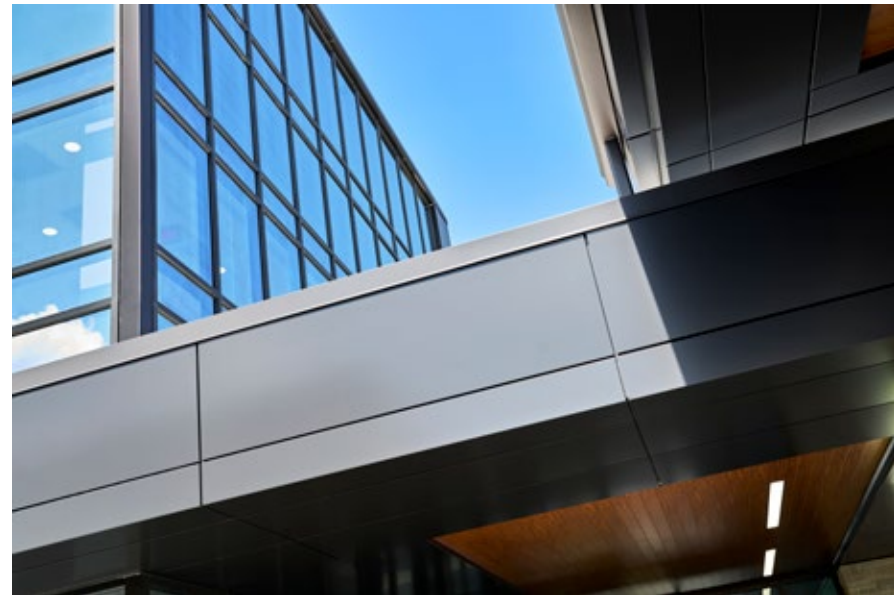
Sumner County Judicial Center
Gallatin, TN





12 HEALTHCARE

University Hospitals – Amherst Health Center
& UH Amherst Beaver Creek Surgery Center
Amherst, OH





13 EDUCATION

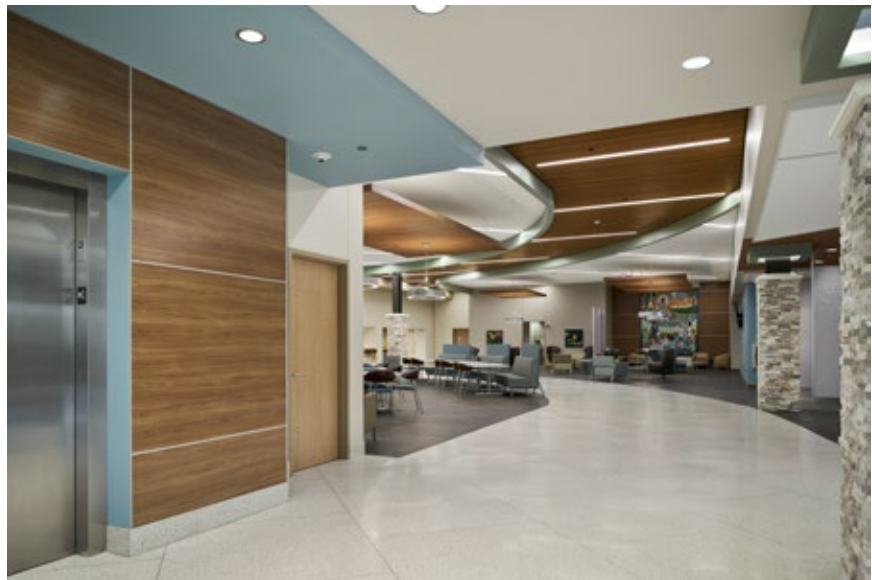
St. Paul Christian Academy –
McGuffey Hall Interior Renovation
Nashville, TN





14 HEALTHCARE

Trinity Health System –
Trinity Medical Center West
Steubenville, OH



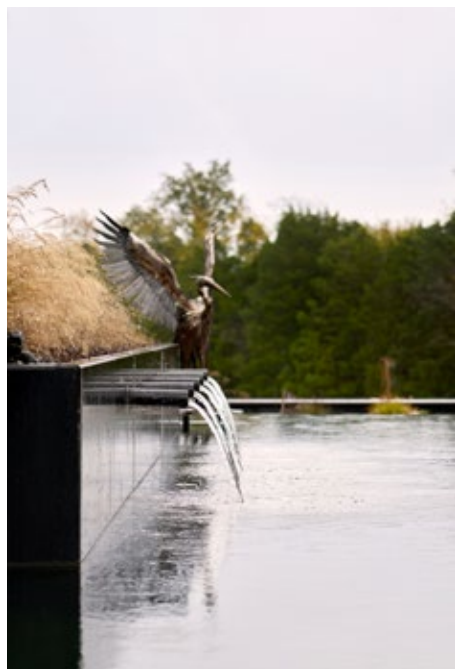
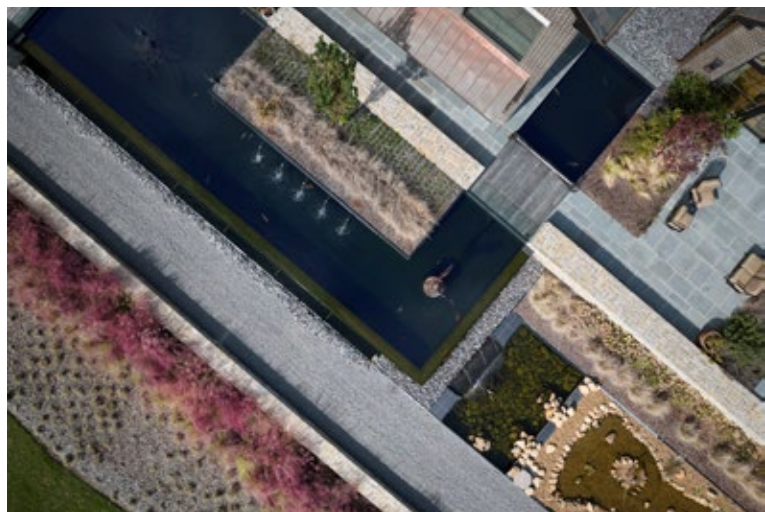


15 RESIDENTIAL

Private Residence

Gallatin, TN









16 EDUCATION

Vanderbilt University – Blair School of Music
Steve & Judy Turner Recital Hall
Nashville, TN





17 HEALTHCARE

TOA Orthopaedic & Urgent Care Clinic
at Bristol Ridge
Clarksville, TN





18 HEALTHCARE

Baptist Memorial Hospital – Carroll County
Hospital Outpatient Surgery Department &
The Jackson Clinic
Jackson, TN





Belmont University – Jack C. Massey Center

Local Market Leadership Award, Quality of Life, USGBC Tennessee

Award of Merit, Higher Education/Research, Engineering News Record (ENR) Southeast

Award of Excellence, Build Tennessee, Associated General Contractors (AGC)

Excellence in Construction, Institutional \$75M - \$100M, Associated Builders and Contractors (ABC) Greater Tennessee



Tempo by Hilton

Development of the Year (Select/Limited Service) 2024 at the Americas Lodging Investment Summit (ALIS)

Citation Award, AIA Middle Tennessee

Excellence in Construction, Commercial \$50M - \$100M, Associated Builders and Contractors (ABC) Greater Tennessee



Sumner County Courthouse

Excellence in Construction, Institutional \$50M-\$75M, Associated Builders and Contractors (ABC) Greater Tennessee

Institutional New Construction \$70-\$75 million category, Build Tennessee Awards, Associated General Contractors of Middle TN



Thomas F. Frist, Jr. College of Medicine at Belmont University

Outstanding Design, American School & University Architectural Portfolio

Excellence in Construction, Mega Projects \$100M - \$160M, Associated Builders and Contractors (ABC) Greater Tennessee



Trevecca Nazarene University – University Commons

Outstanding Project, Learning by Design Fall 2024 Architecture and Interior Design Awards of Excellence



Prima at Paseo South Gulch

LIVE Award, Nashville Downtown Partnership



St. Paul Christian Academy Dining Hall and Theatre Renovation

Outstanding Design, American School & University Educational Interiors Showcase

2024 Recognitions

What truly makes ESa special is **our people** and **the communities** we serve.



Being a part of ESa is about passion, not only for design but also for relationships. We take our role in shaping the built environment very seriously—understanding the impact our designs have on people and their communities. Regardless of design sector, our team seeks to improve and enrich the communities they work in by providing increased access, amenities and equity through design. We work closely with owners and community stakeholders to bring their collective visions to life.

In addition to designing for communities, we regularly give our time and resources to the following charities:

- American Cancer Society (ACS)

In 2024, we raised over \$10,500 for the ACS.

- American Heart Association (AHA)
- Architecture Construction Engineering (ACE) Mentor Program of America
- Habitat for Humanity
- Leukemia & Lymphoma Society (LLS)
- Love Helps
- Metro Nashville Public Schools Academies of Nashville (AN)
- Operation Stand Down
- Second Harvest Food Bank
- The Store
- United Way

ESa has undertaken pro-bono work for many nonprofit organizations in the Middle Tennessee area, including Pinson Hospital Hospitality House and the Nashville Zoo, and supports several charitable organizations including Love Helps and the annual fundraiser Gingertown. Whether it is by volunteering our design expertise or our time, we work together to create environments that positively shape lives and communities.

Members of our team also foster the future leaders of the A/E/C industry by participating in mentorship programs and outreach within the Nashville Public School system through the ACE program.

About Us

Areas of Design	Our Services
Commercial	Architecture
Community + Arts	Interior Architecture
Education	Master Planning
Healthcare	Space Planning
Hospitality	
Residential	
Senior Living	

63
years in business

Headquartered in
Nashville, TN

More than
13,500
projects completed

More than
190
team members

Member of
U.S. Green Building Council

80%
of our work is from repeat clients

Signatory of the
AIA 2030 Commitment

Moving forward together to create environments that shape lives.

1033 Demonbreun Street, Suite 800
Nashville, Tennessee 37203
esarch.com